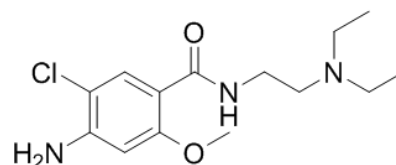


**Product Name** : Metoclopramide  
**Cat. No.** : PC-45204  
**CAS No.** : 364-62-5  
**Molecular Formula** : C<sub>14</sub>H<sub>22</sub>ClN<sub>3</sub>O<sub>2</sub>  
**Molecular Weight** : 299.7964  
**Target** : Dopamine Receptor  
**Solubility** : DMSO: ≥ 41 mg/mL



## Biological Activity

Metoclopramide is a potent dopamine **D<sub>2</sub> receptor** antagonist with K<sub>i</sub> of 28 nM. Metoclopramide also is a mixed 5-HT<sub>3</sub> receptor antagonist/5-HT<sub>4</sub> receptor agonist. Metoclopramide is commonly used to treat nausea and vomiting caused by chemotherapy.

## References

- Matsui A, et al. J Pharmacol Exp Ther. 1998 Nov;287(2):725-32.  
Tonini M, et al. Pharmacol Res. 1995 May;31(5):257-60.  
Bateman DN, et al. Br J Clin Pharmacol. 1978 Nov;6(5):401-7.

**Caution: Product has not been fully validated for medical applications. Lab Use Only!**

E-mail: tech@probechem.com